

BAYEUXFIELDS

at terlingham village

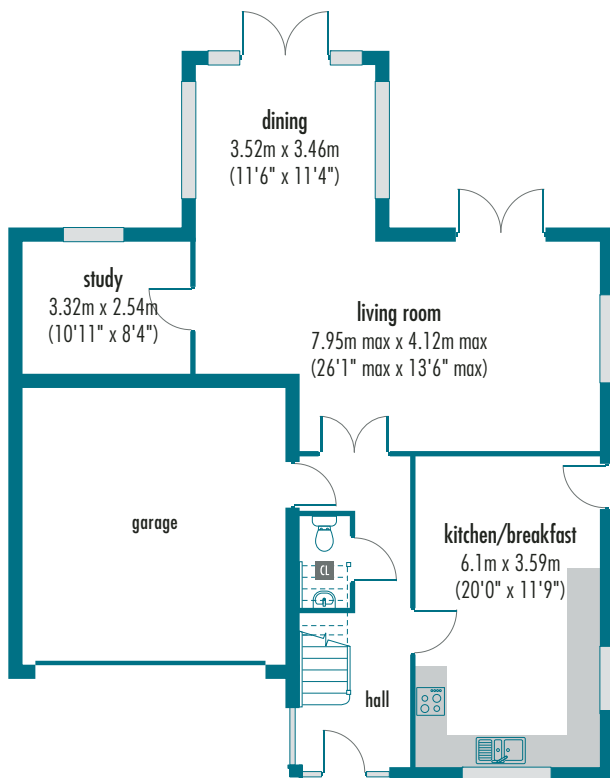
Pevensey



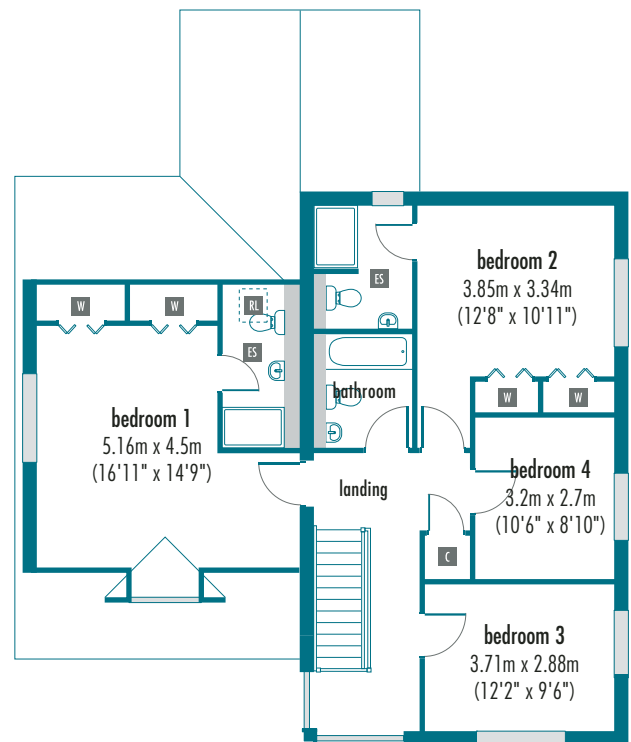
Plot 79 4 bedroom home

176.6 m²/1,900 ft²

ground floor



first floor



CL cloakroom C cupboard W wardrobe ES en-suite RL roof light

All dimensions and areas are taken to finished surfaces and to minimum 1.50m clear head height.

--- Restricted headroom to some rooms. Dimensions shown are maximum unless stated otherwise.

Bedroom dimensions are to wardrobe doors. Please refer to our Sales Manager for details and plot specific measurements.



Pentland Homes

Quality for Life

BAYEUX FIELDS

at terlingham village

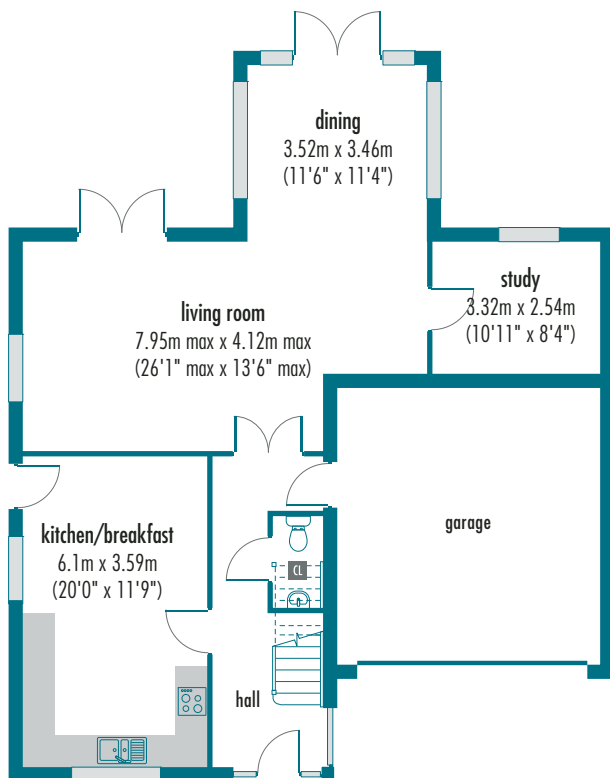
Pevensey



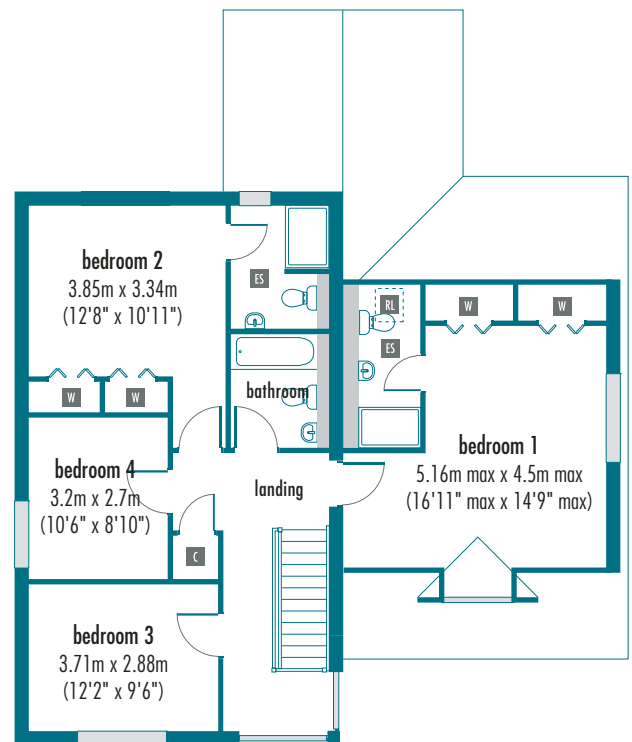
Plot 80 4 bedroom home

176.6 m²/1,900 ft²

ground floor



first floor



CL cloakroom **C** cupboard **W** wardrobe **ES** en-suite **RL** roof light

All dimensions and areas are taken to finished surfaces and to minimum 1.50m clear head height.

--- Restricted headroom to some rooms. Dimensions shown are maximum unless stated otherwise. Bedroom dimensions are to wardrobe doors.

Please refer to our Sales Manager for details and plot specific measurements.



Pentland Homes

Quality for Life

These details are intended to give you a general indication of the development. Pentland Homes reserves the right to alter any part of the development or floor layout at any time. The contents herein should not be deemed to form part of a contract or representation including any such contract. Whilst Pentland Homes has endeavoured to make this brochure accurate and reliable, if there are any points of particular importance to you, please contact us and we will be pleased to check the information for you. Artists' impressions, drawings and photographs are for illustrative purposes only. For more information, please refer to our Sales Manager.

BAYEUXFIELDS

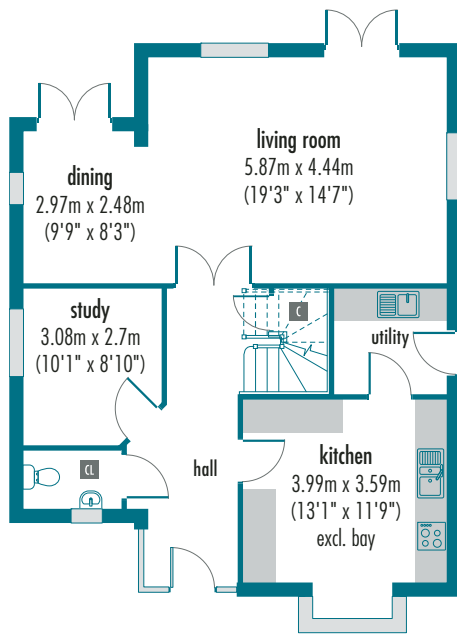
at terlingham village

Windsor

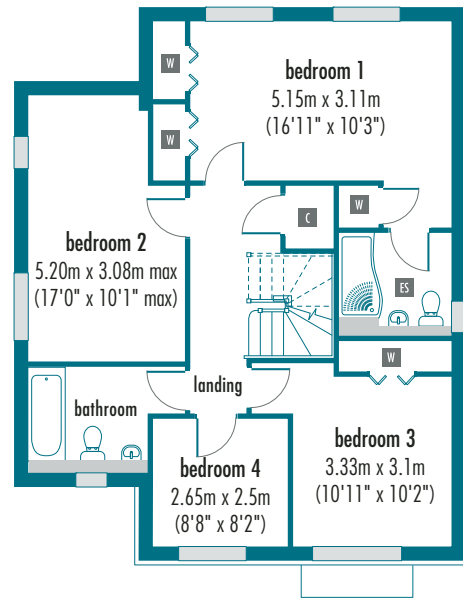


Plots 81, 86 4 bedroom home 158.8 m²/1,710 ft²

ground floor



first floor



CL cloakroom **C** cupboard **W** wardrobe **ES** en-suite

All dimensions and areas are taken to finished surfaces and to minimum 1.50m clear head height.

--- Restricted headroom to some rooms. Dimensions shown are maximum unless stated otherwise. Bedroom dimensions are to wardrobe doors.

Please refer to our Sales Manager for details and plot specific measurements.



Pentland Homes
Quality for Life

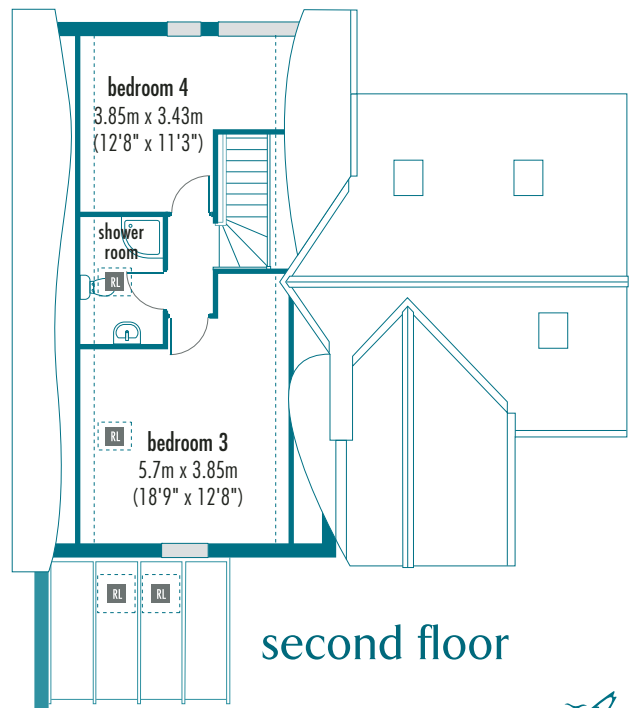
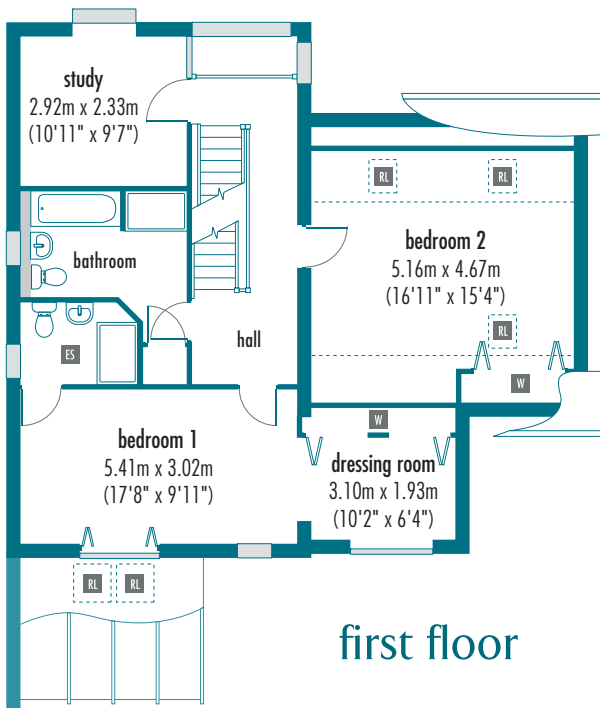
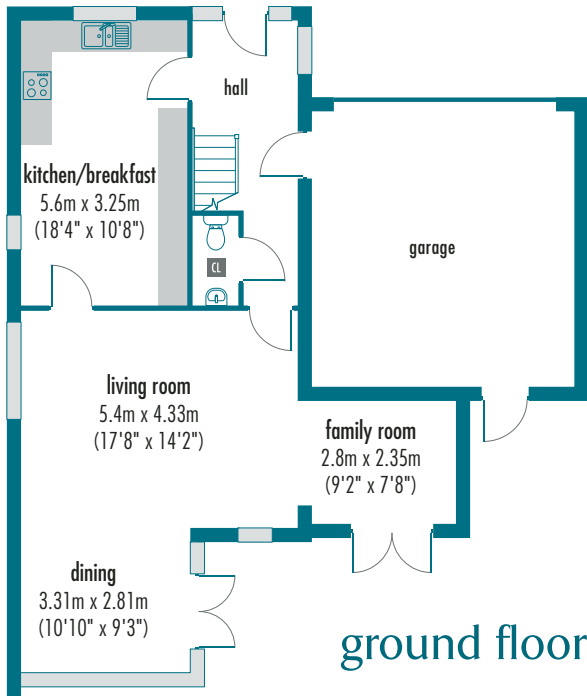
BAYEUX FIELDS

at terlingham village

Chartwell



Plots 82, 83, 84 4 bedroom home 197.3 m²/2,123 ft²



CL cloakroom C cupboard W wardrobe ES en-suite RL roof light

All dimensions and areas are taken to finished surfaces and to minimum 1.50m clear head height. Some plots may be handed to the floor layouts shown.
 --- Restricted headroom to some rooms. Dimensions shown are maximum unless stated otherwise. Bedroom dimensions are to wardrobe doors.
 Please refer to our Sales Manager for details and plot specific measurements.



Pentland Homes
Quality for Life

These details are intended to give you a general indication of the development. Pentland Homes reserves the right to alter any part of the development or floor layout at any time. The contents herein should not be deemed to form part of a contract or representation including any such contract. Whilst Pentland Homes has endeavoured to make this brochure accurate and reliable, if there are any points of particular importance to you, please contact us and we will be pleased to check the information for you. Artists' impressions, drawings and photographs are for illustrative purposes only. For more information, please refer to our Sales Manager.

BAYEUXFIELDS

at terlingham village

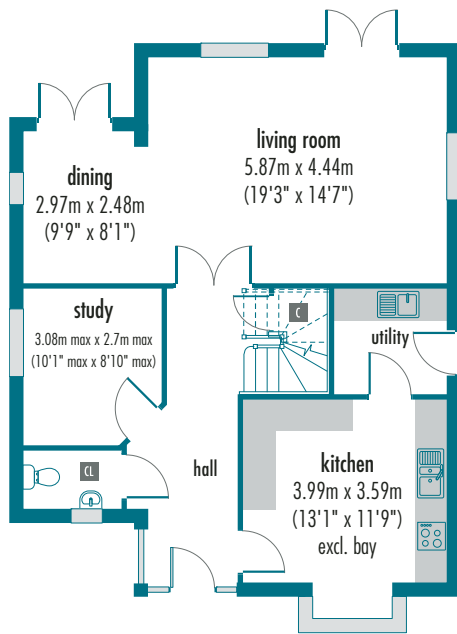
Windsor



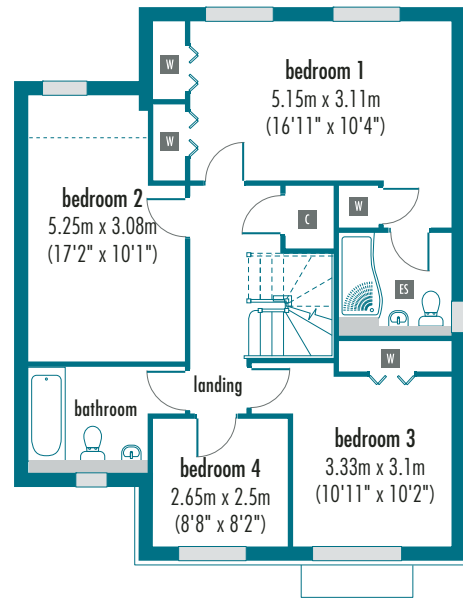
Plot 85 4 bedroom home

158.8 m²/1,710 ft²

ground floor



first floor



CL cloakroom C cupboard W wardrobe ES en-suite

All dimensions and areas are taken to finished surfaces and to minimum 1.50m clear head height.
 --- Restricted headroom to some rooms. Dimensions shown are maximum unless stated otherwise.
 Bedroom dimensions are to wardrobe doors. Please refer to our Sales Manager for details and plot specific measurements.



Pentland Homes
Quality for Life

BAYEUX FIELDS

at terlingham village

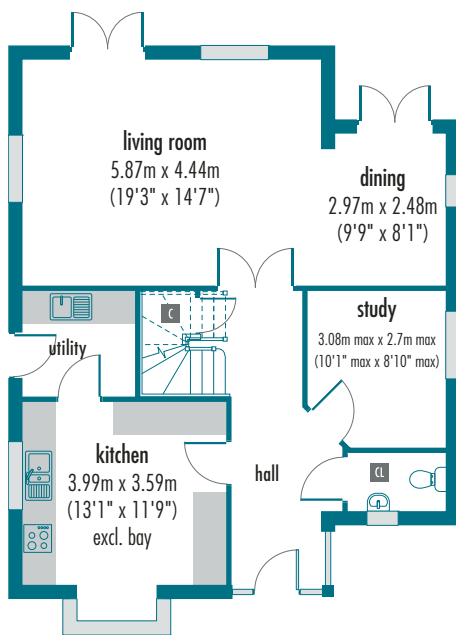
Windsor



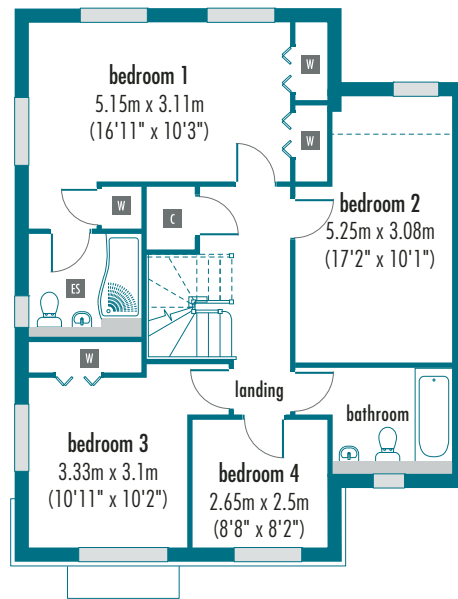
Plot 87 4 bedroom home

158.8 m²/1,710 ft²

ground floor



first floor



CL cloakroom **C** cupboard **W** wardrobe **ES** en-suite

All dimensions and areas are taken to finished surfaces and to minimum 1.50m clear head height.

--- Restricted headroom to some rooms. Dimensions shown are maximum unless stated otherwise. Bedroom dimensions are to wardrobe doors.

Please refer to our Sales Manager for details and plot specific measurements.



Pentland Homes

Quality for Life

These details are intended to give you a general indication of the development. Pentland Homes reserves the right to alter any part of the development or floor layout at any time. The contents herein should not be deemed to form part of a contract or representation including any such contract. Whilst Pentland Homes has endeavoured to make this brochure accurate and reliable, if there are any points of particular importance to you, please contact us and we will be pleased to check the information for you. Artists' impressions, drawings and photographs are for illustrative purposes only. For more information, please refer to our Sales Manager.

BAYEUXFIELDS

at terlingham village

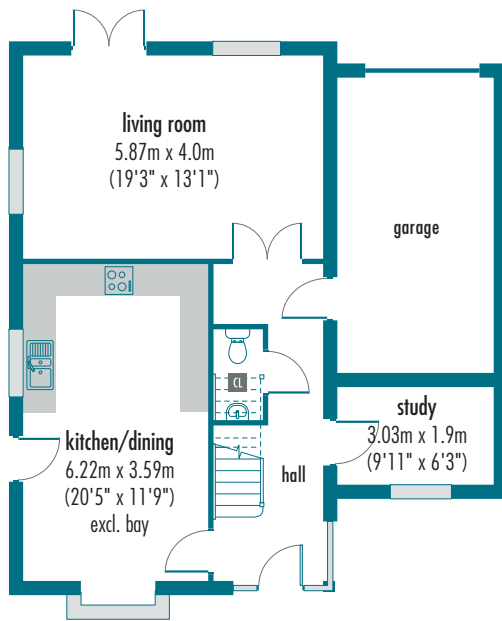
Scotney



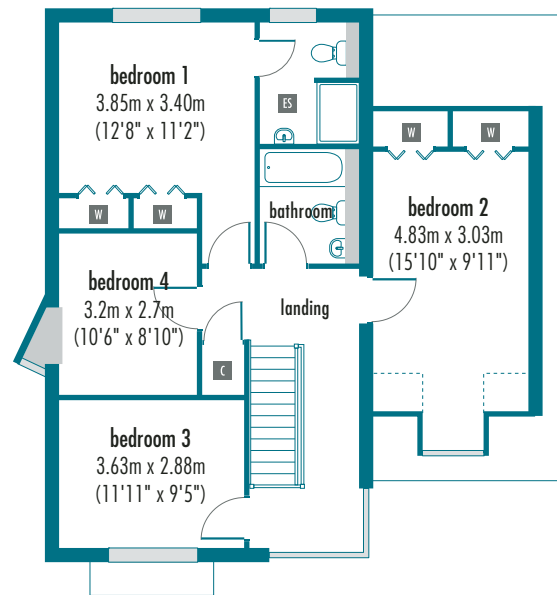
Plot 88 4 bedroom home

146.9 m²/1,581 ft²

ground floor



first floor



CL cloakroom C cupboard W wardrobe ES en-suite

All dimensions and areas are taken to finished surfaces and to minimum 1.50m clear head height.

--- Restricted headroom to some rooms. Dimensions shown are maximum unless stated otherwise. Bedroom dimensions are to wardrobe doors.

Please refer to our Sales Manager for details and plot specific measurements.



Pentland Homes
Quality for Life

BAYEUXFIELDS

at terlingham village

Specification



Plots 79 to 88

GENERAL SPECIFICATION

- NHBC - 10 year warranty ■
- Brick and block traditional cavity wall construction ■
- Partial fill cavity wall insulation ■
- Loft insulation to Building Regulations standards ■

KITCHENS

- Choice of Paula Rosa kitchen unit door fronts from Pentland range ■
- Choice of Silestone worktops and upstands to kitchen from Pentland range ■
- Laminate worktops and upstands to utility room (where applicable) from Pentland range ■
- Silestone worktops and upstands to utility room (where applicable) from Pentland range ■
- Downlighters ■
- Integrated appliances (electric oven, gas hob, microwave, fridge/freezer and dishwasher) ■
- Plumbing for washing machine in utility room/kitchen (where applicable) ■

BATHROOMS, CLOAKROOMS AND EN-SUITES

- White coloured sanitaryware by Ideal Standard ■
- Brassware by Ideal Standard ■
- Mirrors above all wash hand basins ■
- Shaver points to en-suites and bathrooms ■
- Downlighters to en-suites and bathroom ■
- Towel warmer to en-suites and bathroom ■

HEATING AND INSULATION

- Gas fired central heating system ■
- Energy efficient condensing boiler ■
- Thermostatic radiator valves to some radiators ■
- Underfloor heating to ground floor only ■

ELECTRICAL, LIGHTING AND SECURITY SYSTEMS

- TV points in all bedrooms ■
- Telephone points in all bedrooms ■
- Networked satellite TV points to all outlets from main loft position ■
- TV aerial fitted as standard ■
- Mains wired smoke detectors fitted to Building Regulations standards ■
- Wiring for burglar alarm ■
- Full SSAIB alarm system ■

DECORATIVE FINISHES

- Choice of one emulsion wall colour throughout from Pentland range ■
- Smooth ceilings throughout ■
- Internal joinery painted eggshell white ■
- Coving to all rooms *** ■

JOINERY

- Double glazed PVCu windows throughout ■
- Built in bi-fold wardrobes with shelf and hanging rails to two bedrooms ■
- 100mm deep bullnose skirting ■
- MDF window boards ■
- 4 panelled internal doors ** ■
- Choice of door furniture from Pentland range ■

FLOOR FINISHES

- Choice of ceramic tiling to kitchen and cloaks floor from Pentland range ■
- Choice of ceramic tiling to bathroom and en-suite floor from Pentland range ■
- Choice of carpets from Pentland range ■
- Choice of ceramic tiling to ground floor from Pentland range ■

EXTERIOR

- Exterior lamp to front door ■
- Wiring to allow for external light to other external door openings ■
- Turfing and planting to external landscape scheme ■
- Riven stone effect paths and patios ■
- External tap ■

** plain doors to some cupboards

*** other than in loft rooms

■ Standard

■ Cost option available



Pentland Homes

Quality for Life

BAYEUX FIELDS




at terlingham village

Development plan



Plots 79 to 88 Terlingham Village – Phase 3B, Section 2



| | | | | | | | |
|--|----------|----------------|----------------------|---|-----------|----------------|------------------|
|  | Pevensey | 4 bedroom home | plots 79, 80 |  | Scotney | 4 bedroom home | plots 88 |
|  | Windsor | 4 bedroom home | plots 81, 85, 86, 87 |  | Chartwell | 4 bedroom home | plots 82, 83, 84 |

Please refer to our Sales Manager for details and plot specific measurements.



These details are intended to give you a general indication of the development. Pentland Homes reserves the right to alter any part of the development or floor layout at any time. The contents herein should not be deemed to form part of a contract or representation including any such contract. Whilst Pentland Homes has endeavoured to make this brochure accurate and reliable, if there are any points of particular importance to you, please contact us and we will be pleased to check the information for you. Artists' impressions, drawings and photographs are for illustrative purposes only. For more information, please refer to our Sales Manager.