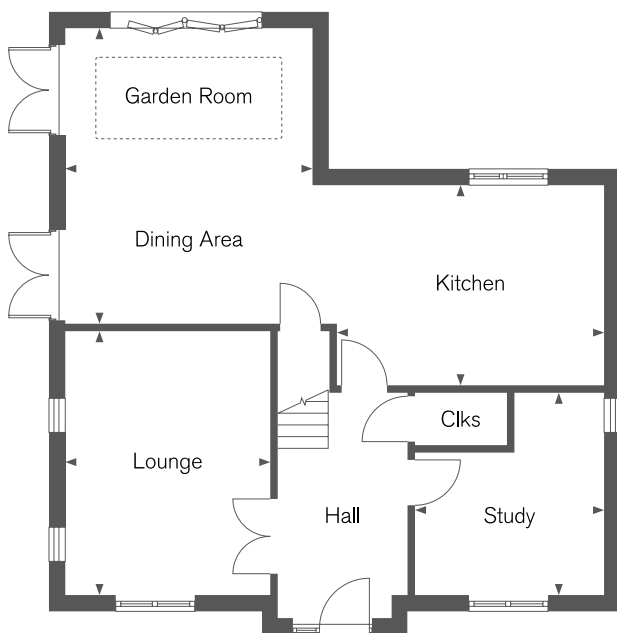


# THE OBSERVATORY

## CANTERBURY

A VERY SPECIAL DEVELOPMENT OF 3 & 4 BEDROOM HOMES



### Ground Floor

#### Lounge

5.31m x 4.11m (17' 5" x 13' 6")

#### Kitchen

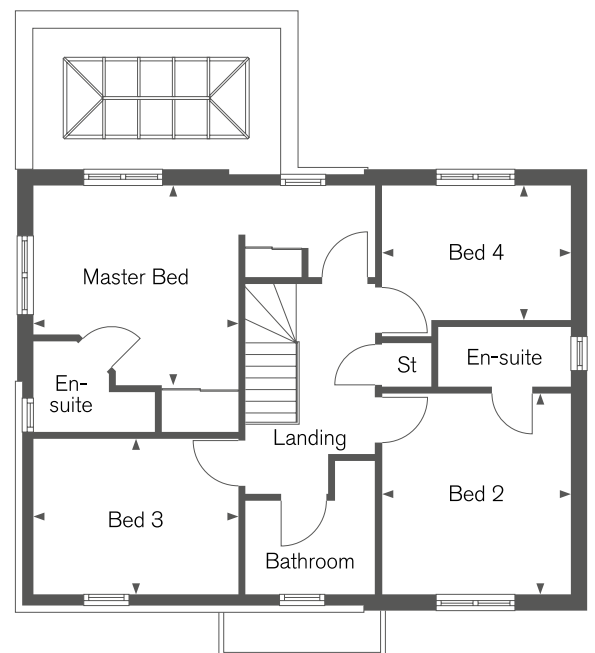
5.34m x 4.01m (17' 6" x 13' 2")

#### Dining Area/Garden Room

5.92m x 4.96m (19' 5" x 16' 3")

#### Study

4.05m x 3.84m (13' 3" x 12' 7")



### First Floor

#### Master Bedroom

4.11m x 4.04m (13' 6" x 13' 3")

#### Bedroom 2

4.06m x 3.84m (13' 4" x 12' 7")

#### Bedroom 3

4.11m x 3.13m (13' 6" x 10' 3")

#### Bedroom 4

3.86m x 2.71m (12' 8" x 8' 11")

Computer Generated Images and floorplans show a typical Dalby house type. Details may vary from plot to plot. Dimensions are approximate and should not be used for furniture space, appliance space or carpet sizes. Please ask for details of your chosen plot. The contents of this leaflet do not form or constitute a warranty or represent part of any contract.