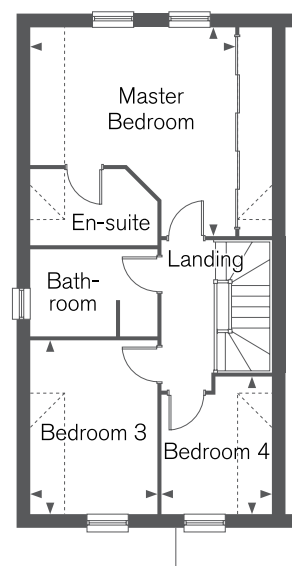
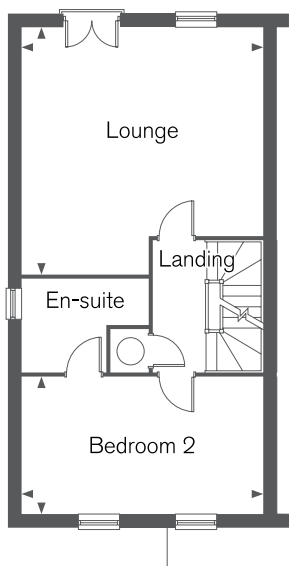
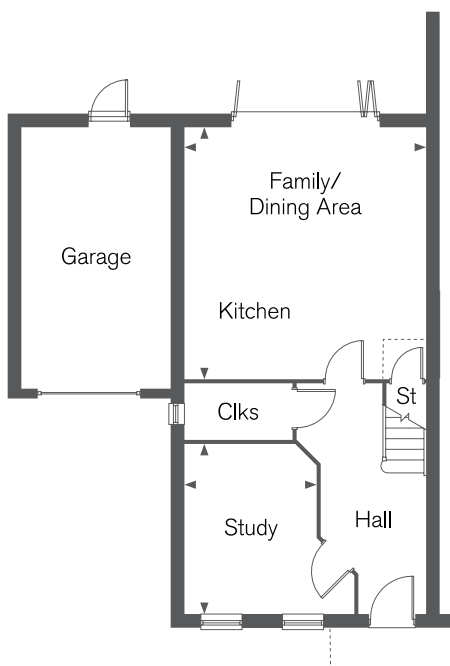




# MULBERRY PLACE

NEW ROMNEY

A VERY SPECIAL DEVELOPMENT OF 3 & 4 BEDROOM HOMES



## Ground Floor

**Kitchen/Family/  
Dining Area**  
5.52m x 5.29m  
(18' 2" x 17' 4")

**Study**  
3.72m x 2.86m<sup>†</sup>  
(12' 2" x 9' 5")

## First Floor

**Lounge**  
5.42m\* x 5.29m  
(17' 10"\* x 17' 4")

**Bedroom 2**  
5.29m x 3.00m  
(17' 4" x 9' 10")

## Second Floor

**Master Bedroom**  
4.57m\* x 4.47m<sup>†</sup>  
(15' 0"\* x 14' 8")

**Bedroom 4**  
3.00m\* x 2.16m  
(9' 10"\* x 7' 1")

**Bedroom 3**  
3.80m x 2.54m  
(12' 6" x 8' 4")

\* maximum † minimum

Computer Generated Images and floorplans show typical Greenwich house types. Details may vary from plot to plot. Dimensions are approximate and should not be used for furniture space, appliance space or carpet sizes. Please ask for details of your chosen plot. The contents of this leaflet do not form or constitute a warranty or represent part of any contract.

