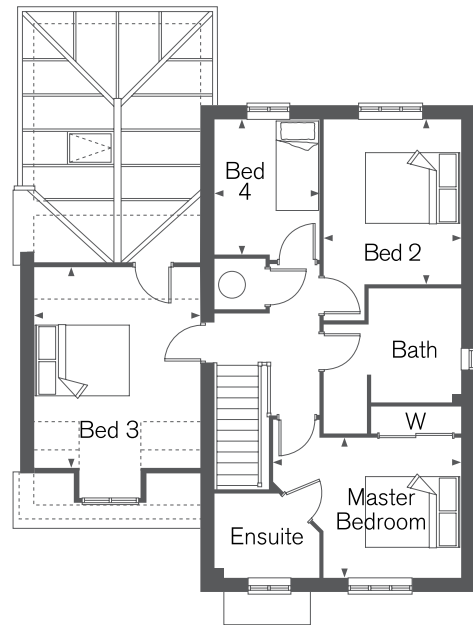
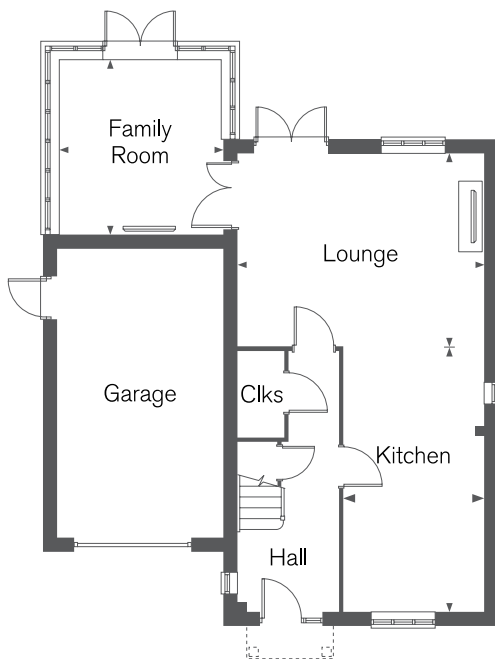




MULBERRY PLACE Phase II

NEW ROMNEY

THE HEVER 1385 SQ FT 4 BEDROOM 2 STOREY HOME



Ground Floor

Lounge

5.18m x 4.05m
(17' 0" x 13' 3")

Family Room

3.71m x 3.47m
(12' 2" x 11' 5")

Kitchen

5.63m x 2.91m
(18' 6" x 9' 7")

* maximum † minimum

First Floor

Master Bedroom

3.95m* x 2.93m†
(13' 0"* x 9' 8"†)

Bed 3

4.16m† x 3.47m
(13' 8"† x 11' 5")

Bed 2

3.45m† x 2.88m
(11' 4"† x 9' 5")

Bed 4

2.81m† x 2.19m
(9' 3"† x 7' 2")

Computer Generated Images and floorplans show typical Hever house types. Details may vary from plot to plot. Please read in conjunction with siteplan. Dimensions are approximate and should not be used for furniture space, appliance space or carpet sizes. Please ask for details of your chosen plot. The contents of this leaflet do not form or constitute a warranty or represent part of any contract.