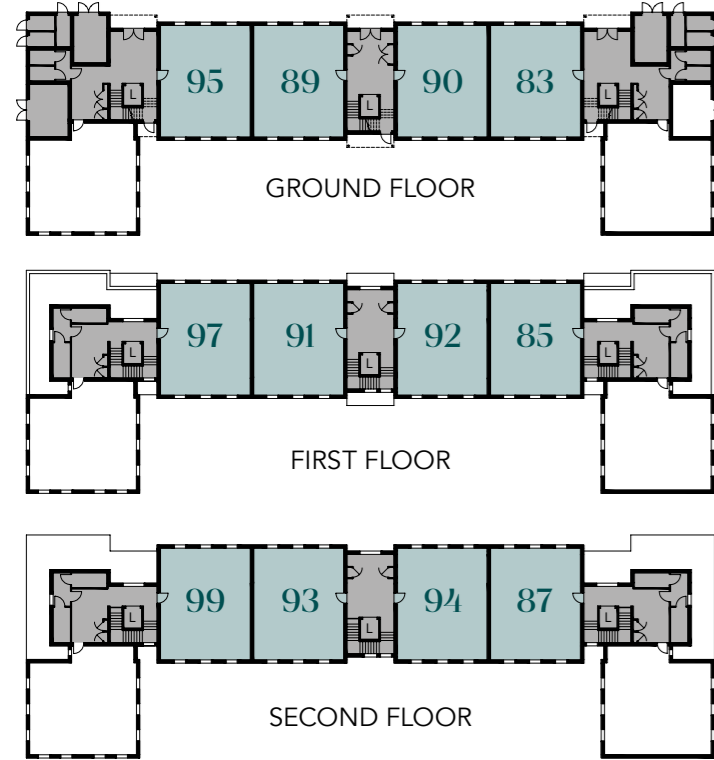


THE ELM

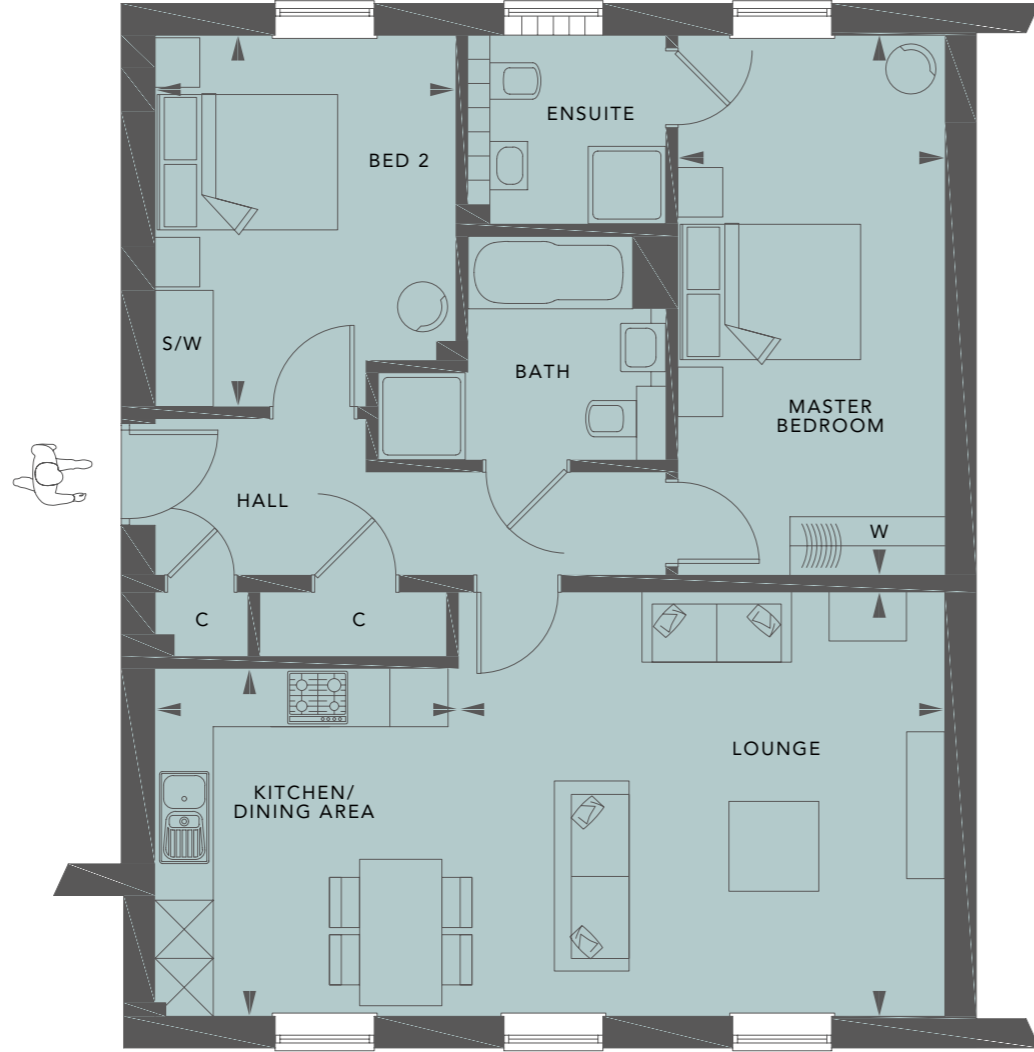
Plots 83*, 85*, 87*, 89*, 90, 91*, 92, 93*, 94, 95, 97 & 99



LOUNGE	5.13m x 4.38m / 16'8" x 14'4"
KITCHEN/DINING AREA	3.03m x 3.60m / 9'9" x 11'8"
MASTER BEDROOM	5.21m x 2.76m / 17'1" x 9'1"
BEDROOM 2	3.85m x 3.11m / 12'6" x 10'2"
TOTAL	82.72 sq m / 890 sq ft



◆ Entrance and lift cores
L Lift



*Plots 83, 85, 87, 89, 91 and 93 are handed.

Details may vary from plot to plot. Dimensions are approximate and should not be used for furniture space, appliance space or carpet sizes. Please ask for details of your chosen plot. The contents of this document do not form or constitute a warranty or represent part of any contract. Please note: to increase legibility these plans have been sized to fit the page. As a result each plan may be a different scale to others within this document. S/W – Space for wardrobe. W – Wardrobe (only provided to Master Bedroom). C – Cupboard.

Cool contemporary charm combines with quality fittings and fixtures to create spacious, superior apartments that are easy to enjoy, and easy to care for – and always a pleasure to come home to.

